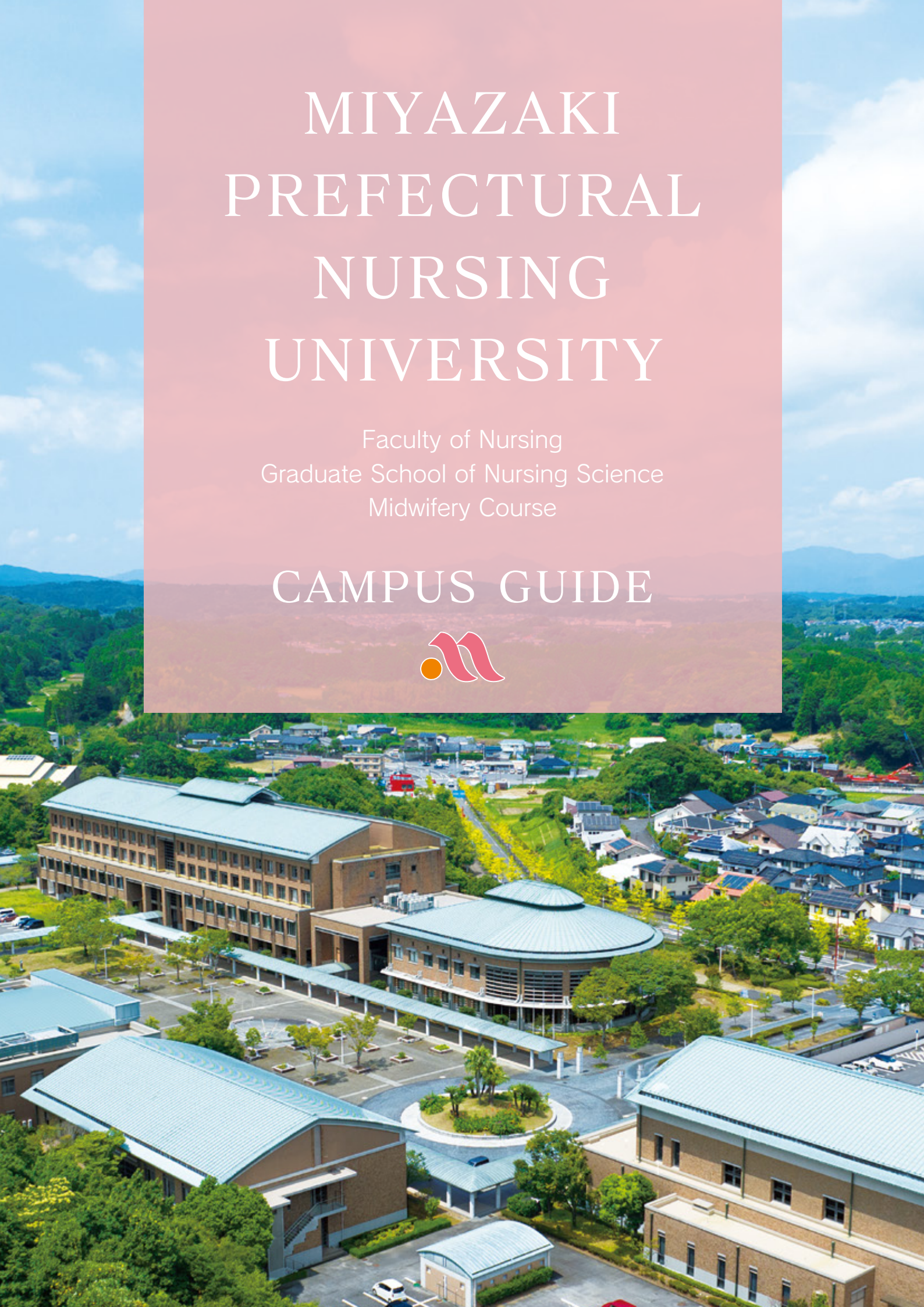


MIYAZAKI PREFECTURAL NURSING UNIVERSITY

Faculty of Nursing
Graduate School of Nursing Science
Midwifery Course

CAMPUS GUIDE



Miyazaki Prefectural Nursing University President

Misako Nagatsuru



As one enters the nursing profession and begins the study of nursing, what are their dreams for the future? It may be an image of a nurse, a public health nurse, or a midwife working in a high-level medical institution, or in the community. There are many places and positions for a nurse to shine.

During the four years of study at our university, students acquire the skills—nursing knowledge, techniques, and mind—to practice nursing that is appropriate for any nursing patient or subject, and under any circumstances. Ultimately, students leave with an unshakable concept of what nursing is. This forms the basis of nursing practice and will enable them to spread their wings as they go out into society.

To support this learning, we have faculty members proud of the nursing profession and passionate about education. And we have staff members dedicated to creating an environment that aids in learning. Our excellent learning environment helps those starting their nursing journeys.



University Logo

Our university logo is a symbol of the gentle embrace that enfolds an irreplaceable life. The orange circle symbolizes that irreplaceable life being enveloped by kind, loving care. The two pink waves represent medical care and nursing, as well as love and caring. Together, our logo represents the M of Miyazaki, and the two waves the N of nursing.

History

- 1997 Miyazaki Prefectural Nursing University established (Faculty & Department of Nursing)
- 2000 Graduate Program approved
- 2001 Graduate Program established (Masters in Nursing)
- 2002 Academic Exchange Agreement formed with Ewha Womens University, Korea
- 2004 Doctoral Program approved
- 2005 Doctoral Program established (Doctor of Philosophy in Nursing)
Academic Exchange Agreement with Chiang Mai University, Thailand
- 2014 Certified course in Infection Control Nursing established
- 2016 Special Course in Midwifery approved
Academic Exchange Agreement formed with Chosun Nursing College, Korea
- 2017 Special Course in Midwifery established
- 2018 Academic Exchange Agreements formed with Ichsan Medical Centre Bintaro, Indonesia, and STIKES Bani Saleh Bekasi, Indonesia
- 2019 Academic Exchange Agreement formed with Universitas Indonesia, Indonesia
- 2021 Academic Exchange Agreement formed with STIKES Medistra Indonesia
- 2022 Master's Program Practitioner Training Course established

Yearly Schedule

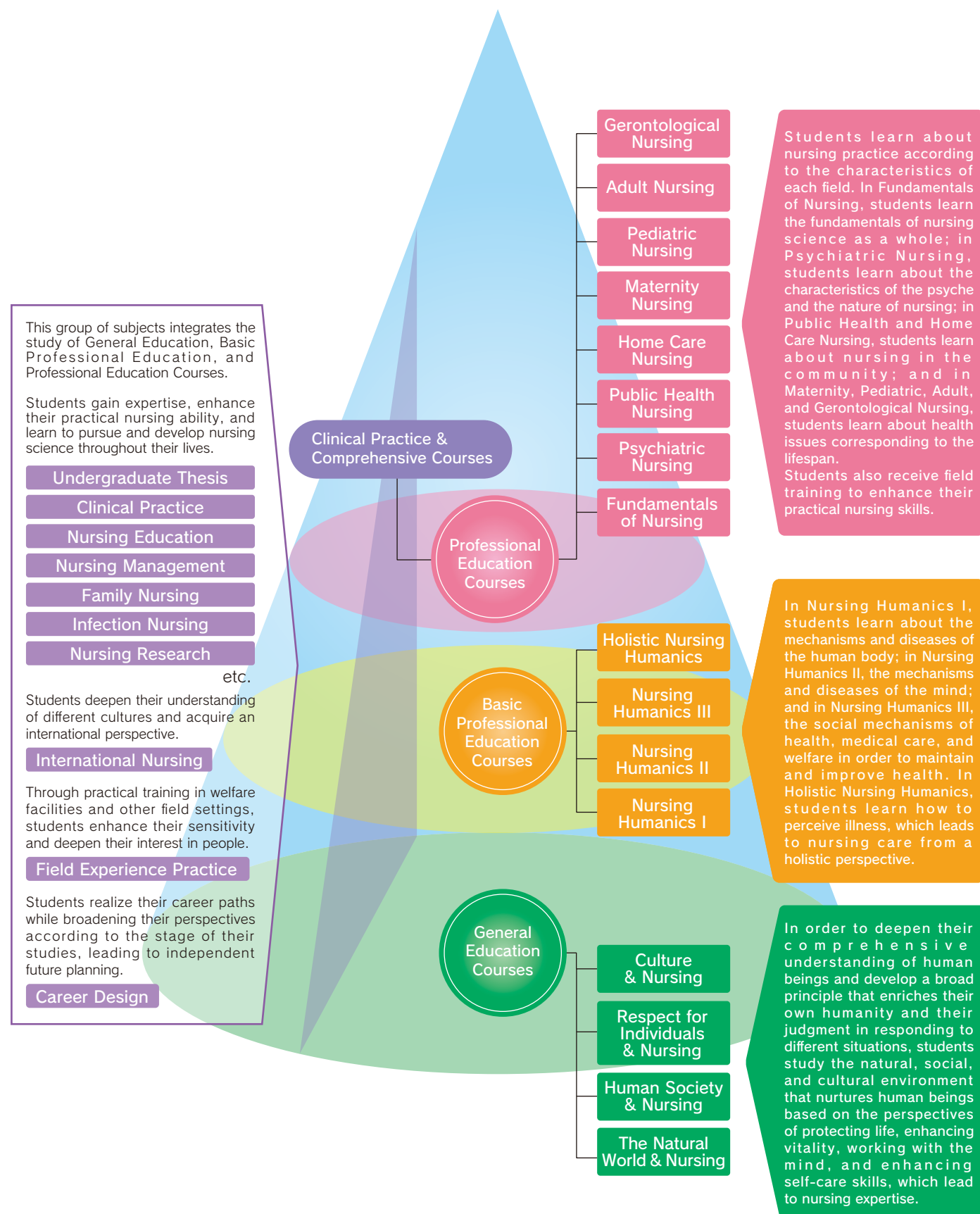
- 4 April**
 - Entrance Ceremony
 - Incoming and Continuing Student Orientation
 - Course Registration ■ Start of Spring Semester
- 5 May**
 - "Ginkgo" School Festival
 - Hosting exchange students from Chiang Mai University, Thailand
- 6 June**
 - University Foundation Day
 - Clinical nursing practice (4th year)
 - Hosting exchange students from Chung Shan Medical University, Taiwan
- 7 July**
 - Open Campus
- 8 August**
 - Field Practice Experience (1st & 2nd year)
 - Summer study abroad programs
 - Start of summer break
- 9 September**
 - Clinical nursing practice II (3rd year, through February)
- 10 October**
 - Start of autumn semester
- 11 November**
- 12 December**
 - Winter break
- 1 January**
- 2 February**
 - Clinical nursing practice I (2nd year, through March)
- 3 March**
 - Graduation
 - Spring study abroad programs



Undergraduate Curriculum

Human life and the nursing — community health network

Our goal is to train nursing professionals capable of utilizing their local health network to aid individuals in the community to develop healthier lives for themselves.



Graduate School

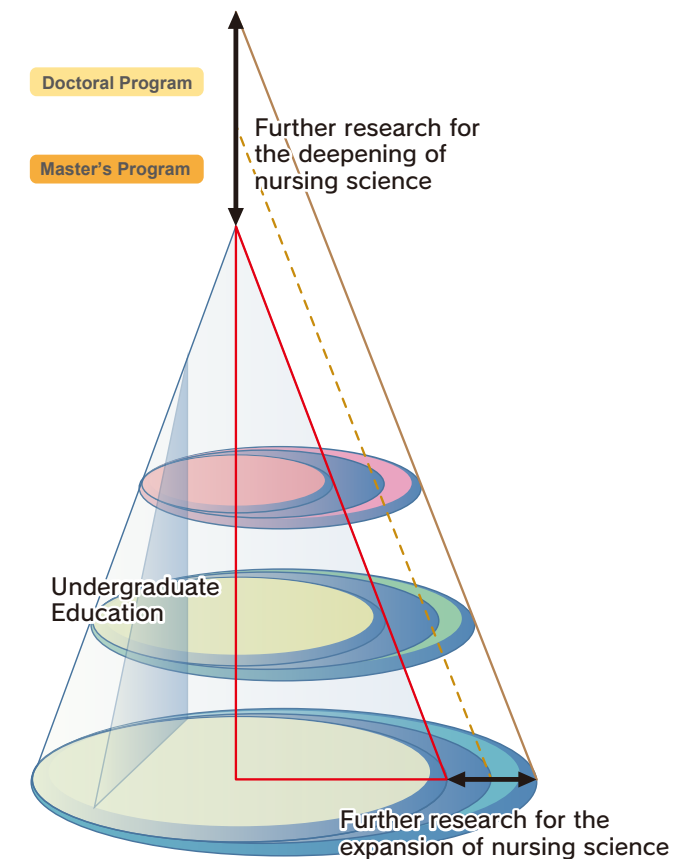
Educational Philosophy

The Graduate School of Nursing aims to train nursing professionals able to take action in support of people's health while pursuing the full spectrum of nursing science for the revitalization of the progress of community-based nursing, as well as improving nursing care.

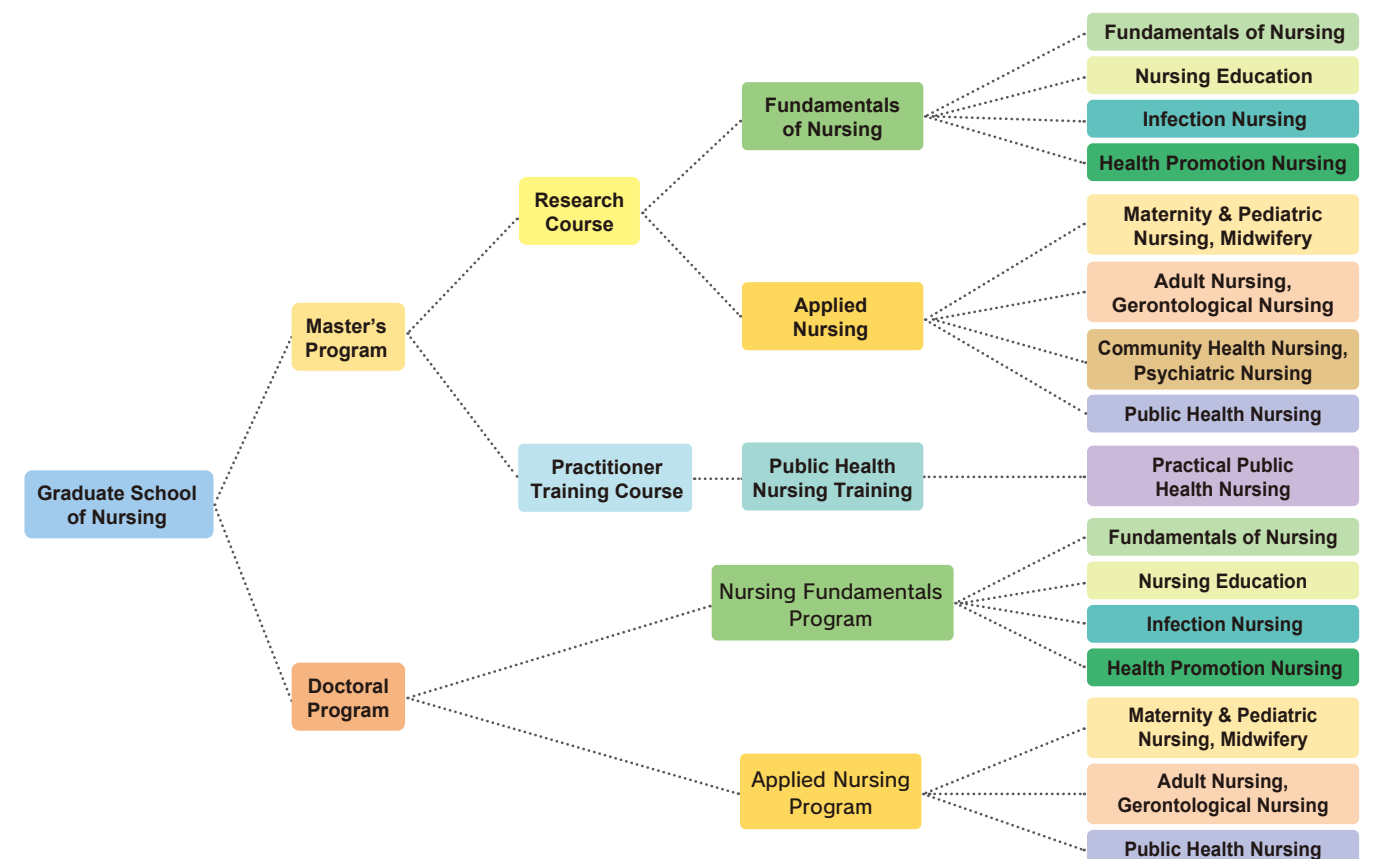
The Master's Course cultivates professionals capable of developing methods to support the health of individuals while striving toward the unique expertise of the nursing profession through acquiring the scientific skills to analyze complex nursing phenomena.

The Doctoral Program goes one step further, aiming to instill research skills appropriate for both educators and independent researchers who train nursing professionals. Namely, the program seeks to develop specialists in areas of high necessity for solving health problems, able to discover new issues independently and explore previous research to develop their own empirical research plan and field closely related to practice.

Graduate School Education



Structure of the Graduate School of Nursing Science





Master's Program

In the Master's Program, graduate students select one of two courses in which to complete their coursework and research.

Research Course

This course includes two fields of study for specialization.

Fundamentals of Nursing Studies enhances the ability of nurses to theoretically and practically develop their unique expertise in the areas of health, medicine, and welfare in an aging society.

Applied Nursing Studies improves nurses' abilities to lead through an understanding of real-world conditions and structural analysis of issues in nursing practice.

Then, in Specialized Research, students are guided by a faculty advisor in the selection of a field and the research process. Students receive regular guidance from their advisor in writing their Master's thesis. During the process, students may receive guidance from multiple members of faculty.

Practitioner Training Course

Sharing General Subjects with the Research Course, the Practitioner Training Course covers graduate-level content as indicated in the national regulations for the training of a public health nurse (PHN).

Through a study of public health theory and the experience of multiple practicums, students' coursework culminates in Practical Research, in which they conduct research on issues in the local community.

Doctoral Program

The Graduate School of Nursing aims to train nursing professionals who can support individuals' health while pursuing the full range of nursing science to revitalize community-based nursing and create better nursing care.

Based on the nursing perspectives and research methodologies acquired in the Master's Program, elective courses are offered in two fields (Fundamentals and Applied Nursing) so that students can focus on their nursing work in light of the current state of nursing science. In addition, to ensure an academic level of nursing research, general courses are offered to broaden students' scope of nursing science.

Nursing Fundamentals Program

In this program, based on the premise of investigating the internal structure of the fundamentals of nursing, we aim to create and demonstrate new knowledge and skills to meet today's social needs by conducting education and research related to fundamentals of nursing science to address problems that cannot be solved with existing knowledge and skills alone. In nursing theories which guide practice, we aim to move from highly abstract to representational theories useful for understanding the structure of real-life problems and further their stepwise systematization. In addition, we teach methods of analysis in the pursuit of scientifically-based superior techniques acquired empirically in practice, and develop them for general purpose. We also work to develop nursing education methods to raise the level of nursing technique acquisition in fundamental nursing education.

In addition to the aim of developing practical, evidence-based nursing skills to maintain and improve health, we seek to provide education and research toward improving professional skills in infection control from a nursing standpoint.

Applied Nursing Program

In this program, education and research guidance are provided with the aim of developing support methods to develop individualized nursing practice in response to the diverse nursing needs which have arisen in response to rapid changes in social conditions. In this context, from the standpoint of supporting the continuity of life, we work on the development of support methods for solving health issues and problems that affect the birth and healthy growth of life.

Additionally, we aim to develop support programs for both individuals' and families' problems brought about by health disorders, and to develop support methods from the perspective of how to demonstrate nursing expertise in adjusting the lives of those receiving medical care. More, we develop methods to analyze and present the health and life issues of the community by understanding the characteristics and structure of the community as a whole, as well as methods to make the community safer and more amenable for living, such as building home and community care systems through collaboration with the community.

Midwifery Course

For the mothers and children of Miyazaki Prefecture

The role of midwives is to assist in regular childbirth; provide meticulous care during the pregnancy, postpartum, and puerperium periods; and offer consultation and support for breastfeeding and childcare amid increasingly sophisticated and complex obstetric care technologies. This is an extremely important role to enable the people of Miyazaki Prefecture to give birth and raise their children with peace of mind.

Education in the Midwifery Course aims to train qualified, practical midwives who are professionals with close ties to the community. Furthermore, as part of the role of the Prefectural Nursing University, we are enhancing career education to meet the needs of continuing education.

◆ Curriculum

Course Sections	Course Titles
Fundamentals of Midwifery	Introduction to Midwifery, Bioethics, Women and Health, Health Education
Midwifery Training	Diagnosis and Techniques of Gestation, Labor and Delivery, Postpartum and Neonatal Care, and High Risk Pregnancy Diagnostic and Technique Practice of Gestation, Labor and Delivery, and Postpartum and Neonatal Care Mother and Child Health and Practice in the Community, Midwifery Process Practice, and Midwifery Management
Midwifery Practice	Pregnancy, Labor and Delivery, Postpartum and Neonatal Care, Continuing Case Study, Midwifery Operations Management, Mother and Child Health in the Community
Research	Information Science, Fundamentals and Practical Midwifery Research

◆ Course Schedule

4 April	● Entrance Ceremony & Start of Class
5 May	● Coursework & Training
6 June	
7 July	● Midwifery Practice (Pregnancy, Birth, Postpartum, Neonatal: 3 weeks)
8 August	
	● Summer break
9 September	● Midwifery Practice (Pregnancy, Birth, Postpartum, Neonatal: 7 weeks) (Midwifery Operation Management: 2 weeks) (Mother and Child Health in the Community: 1 week)
10 October	
11 November	
12 December	● Winter break
1 January	● Continuing Case Study
2 February	● National Certification Examination ● Research Presentations
3 March	● Peer Counseling ● Completion Ceremony



Neonatal resuscitation training



Birth assistance training

Research Activities

Through the wide range of research specializations represented at our university, we aim to establish a scholarly foundation, an educational methodology, and personalized patient care in nursing, as well as contribute research in our local community.

General Education

- Developing natural and life science education for nursing
- Development and promotion of preventive care exercise for the elderly
- Assessment and care planning; Organization of dementia-friendly communities; Multi-professional cooperative team building
- Extensive reading; English for nursing purposes; Intercultural communication
- Bibliographical research of Japanese literary works
- The effect of changes in sleep on next-day processing performance

Basic Professional Courses

- Study on sleep and intervention for improving sleep quality
- Infection control in elderly care facilities
- Developing obstetric and gynecological care and nursing in Miyazaki
- Analysis and visualization of specific health checkups and guidance as well as medical care expenditure

Professional Courses

Fundamentals of Nursing

- The process of nursing theory acquisition; The construction of human rights and ethics education
- Recuperative care support for patients with chronic illness
- Self-evaluation in practical instruction
- Students' process of patient visualization
- Nursing support for families of terminally ill patients
- Education promoting the formation of a nursing perspective

Psychiatric Nursing

- Development of a human resource skills training support program for psychiatric hospital managers
- Intuition in psychiatric nursing practice
- Early intervention and prevention of relapse in psychiatric nursing practice
- Utilizing discharge support in psychiatric hospitals; Research on pre-discharge psychiatric visits

Home Care Nursing

- Community-oriented nursing skills development
- Nursing care that supports living in the community until the end of life
- Care prevention exercises for people requiring support and care
- Characteristics of home-care nurses supporting the individuality of the elderly with terminal cancer

Public Health Nursing

- In-service education for the improvement of public health nurses' practical skills
- Peer support training program development for nursing professionals with cancer experience
- Supporting the formation of mothers' child-raising ability
- Medical examination and health care support for people with mental disabilities
- Prevention of lifestyle-related diseases in the community
- Research on regional networks for health promotion

Maternity Nursing

- Adolescent health support focusing on fertility
- Nursing science education in the field of maternity nursing science
- Women's health support

Pediatric Nursing

- Child-raising support to nurture healthy parents and children
- Processes and factors in the joy of parenting for caregivers of children with medical care needs
- Support for patients with medical care needs and their families

Adult Nursing

- Sexual health support for HIV positive individuals
- Nursing care for patients with hereditary cancer and their families
- Clinical judgment of mid-career nurses in year 3-5; Characteristics of nursing student assessment using quantitative text analysis
- Research on the skill acquisition of nursing students
- Factors affecting continuation in exercise classes for the elderly

Gerontological Nursing

- Caring in cancer nursing
- Foot care leading to support for fall prevention in the elderly
- Quality of life in the elderly

Clinical Practice & Comprehensive Courses

- Educational methods in infection control nursing
- Development of the local nursing workforce and the infection control support system for crisis management of emerging infectious diseases

Midwifery

- Development of a mental health program for childrearing mothers suffering from premenstrual syndrome
- Childcare support for husbands of older first-time mothers
- Midwifery care interventions by skilled midwives during the labor and delivery process
- Preconception care for women with menstrual symptoms

Our faculty is striving to advance nursing science by pursuing research across the field in a range of specialties. While this is only an overview of research from our university, please use the QR code to see the full list of faculty and their research specializations.



Nursing Research and Training Center

Our university is actively developing contributions to our region using our expertise in researching health issues and problems faced by the community. The Nursing Research and Training Center cooperates with both organizations and individuals to provide varied support.



Public lecture: Healthy Living for an Energetic Body and Mind

The Center also plays an important role in supporting nursing professionals in their career advancement. We established a Certified Nurse Education Course with the goal of more specialized nursing practice. The course offers training opportunities based on the specializations of nursing professionals. The Nursing Research and Training Center continues to serve as a bridge between the community and university and to work for the health of the community.



Discussion with community development support groups



Guest lecture at a local high school & university collaboration



Recent Contributions to the Community

Prefectural Cooperation

- Public lecture programs
- Health promotion evaluation using cable TV broadcasting in a mountainous region
- Creating nursing prevention exercises for those requiring support and care
- Support for high school students related to sexuality and reproduction
- A model for improving and preventing frailty among the elderly in the community
- A dementia health care program for new comprehensive community care for medical and welfare services
- Health support for menopausal women

Cooperation with Area Nursing Professionals

- Practical on-site training on infection control in elderly care facilities
- Infection control improvement training to support leader development and infection control teams
- Collaborative practice and research to improve nursing quality in community health care
- Educational skills development for mid-level nurses in psychiatric hospitals responsible for training new nurses
- Networking to improve psychiatric home visit nursing skills

Government & Academic Partnerships

- Building capacity for post-compulsory hospitalization discharge support



Public lecture



Infection control skills training

International Exchange

For academic and educational development, our university has ongoing exchanges with institutions abroad to broaden the perspective of our faculty and students through exchanges with our sister universities, spread our university's nursing approach, and expand our network internationally through academic and educational cooperation.

Academic & Educational Exchange Partner Universities

1. Chiang Mai University Faculty of Nursing, Thailand
2. Chosun Nursing College, South Korea
3. University of Ichsan Satya, Indonesia
4. STIKES Medistra, Indonesia
5. Universitas Indonesia Faculty of Nursing, Indonesia

Student Study Abroad Opportunities

Short-Term Scholarship Program

Each year, typically two students are awarded a travel scholarship for a short-term study abroad during one of the long semester breaks. Interested students devise their own travel and research plans according to their own nursing interests and then submit them for application. Upon returning from their trips, students then share their experiences in a variety of ways, including giving oral and poster presentations.

Short-Term Exchange Student Hosting Program

We host Thai exchange students from the Faculty of Nursing at Chiang Mai University and Korean exchange students from Chosun Nursing College. In the CMU hosting program, our students host the Thai students in their homes, allowing the Thai students to experience both student life in Japan and engage in student exchange. In both the CMU and CNC hosting programs, students attend lectures and nursing practice on campus and have exchanges with MPNU students in their classes.

Short-Term Scholarship Recipient

Supporting People in the Community (Kenya)

Yoshie K.

I spent two weeks as a nursing student in Kenya, and learned about Kenyan life and education, agriculture, welfare, and medical care through volunteering, including hospital, orphanage, and home visits and participating in a farm homestay. In particular, home visits to AIDS patients made me think about the current state of the patients and their families. It also made me think about the standard of services needed to assist those in the community living with disease. I hope to take advantage of this learning opportunity to be able to care for people of all nationalities and cultures.



▲With the counselors who shared home visits to AIDS patients



▲With nurses I met during a hospital site visit

Student Experience in the Hosting Program

Haruka I.

I've always been interested in other cultures, and I heard about this Chiang Mai host volunteer program just when I was thinking about how I could participate in some kind of exchange. I've hosted a CMU student for the past two years. I was a little worried about what we could talk about when we were at my apartment after school because I live alone. I also doubted my ability to speak effectively in English because I had only learned English in school and had never met or interacted with someone from another country so directly. However, when I was a host for the first time with the help of some older students, even though I couldn't speak English as well as I wanted, my guest did her best to understand me so that we could communicate.

Living with an exchange student allows you to learn about cultural and lifestyle differences, but it also lets you reconsider your own lifestyle habits. I got to know MPNU students from different academic years, so the best word to describe this week is enriching. This is relevant especially for those thinking about joining the Chiang Mai study abroad program because hosting a CMU student first lets you get to know the Thai student you will spend time with in Thailand even better.



Short-Term Study Abroad Programs

We offer study abroad programs to help broaden students' perspectives in Thailand, South Korea, Indonesia, Taiwan, and the United States. Our students experience life and nursing in local communities under the guidance of instructors. They also interact with people of different ages and learn about different lifestyles and ways of thinking.

Chiang Mai University Exchange Program

This is an ongoing exchange program with the Faculty of Nursing at Chiang Mai University, Thailand, with whom we have an academic exchange agreement. During the ten-day program, through lectures, facility tours, and site visits, students learn about nursing, medical care, and nursing education in Thailand, as well as differences in customs and cultures. Students gain an understanding of Thai culture through spending time with CMU students outside of class.

Korea Homestay & Intercultural Experience Program

While participating in a homestay, students spend about one week in South Korea experience life and culture and an exchange with the department of nursing at a local university.

America Homestay Program in San Jose, California

In this program, students can experience intercultural exchange by interacting with local people, nurses, and nursing students through site visits to San Jose State University, a local high school, and an elderly care facility. This program lasts about 10 days, during which time students stay with local families.

Indonesia Study Program

Lasting about 10 days, this program provides students with the opportunity to participate in a variety of nursing, health care, and cultural exchanges at different medical facilities, institutions, and sites.

Chiang Mai Student Hosting Program& Chiang Mai Study Abroad Program

What I Learned from My Two Experiences (Thailand)

Aoi N.

I volunteered to host a Chiang Mai student and joined the study abroad program at Chiang Mai University. Living together for a week as a host volunteer, I felt the difference in our cultures and ways of thinking. In the study abroad program, I visited the hospital, a health center, and a childcare center attached to the university. There I learned about the nursing care methods specific to Thailand, as well as the differences in our ways of thinking about care. I want to make use of this valuable study to become the kind of person who can understand and cooperate with others in this modern age of internationalization.



Chiang Mai Program (visiting the on-campus nursery school)



Chiang Mai Program (Mae Sa Elephant Camp)



South Korea Program (History & culture experience)



Training experience at San Jose State University



San Jose Program (Exchange at Los Gatos High School)



Indonesia Program (exchange with nursing students from University of Ichsan Satya Faculty of Health Sciences)

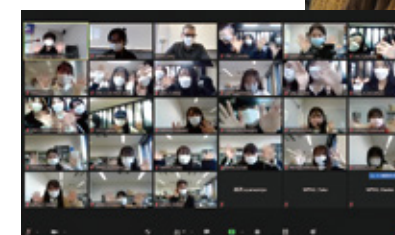
Online Exchange Programs

Chosun Nursing College (South Korea)

For the past three years, we have conducted online exchanges with CNC on themes related to students' application of their nursing knowledge in their daily lives. Exchanges included student group presentations, Q&A sessions, and discussion times in which students were able to freely interact.



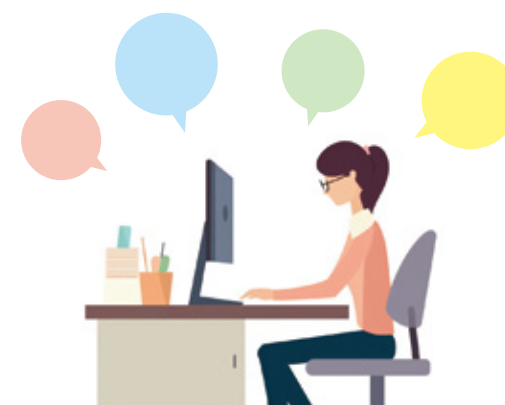
During the online exchange



▲Participants' screen in the exchange

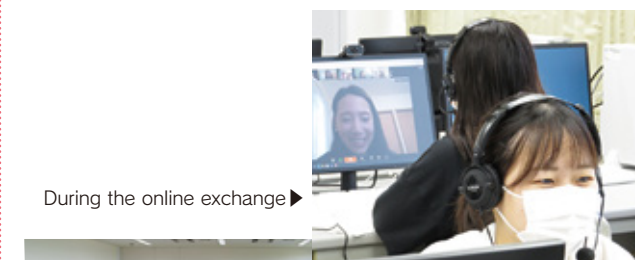
STIKES Medistra Indonesia

Fourteen students and 15 faculty members from our university attended an online lecture meeting held by STIKES Medistra Indonesia, one of our sister institutions. There were nearly 300 participants in total. Three lecturers, including our head of Psychiatric Nursing, Professor Kawamura, delivered presentations on the theme Supporting Psychiatric and Socio-Psychological Health in Times of Pandemic.



Chiang Mai University Faculty of Nursing (Thailand)

Over 180 nursing students from 13 universities in Thailand, Korea, China, and Japan participated in an online exchange program hosted by the Faculty of Nursing at Chiang Mai University in Thailand. Nineteen students participated from our university: 15 first-year students and 4 second-year students. There were presentations and group question-and-answers sessions on eight topics, including Experiences as a Nursing Student, Education, Covid-19, Festivals and Holidays, and the Role of the Nurse in Each Country.



During the online exchange ▶

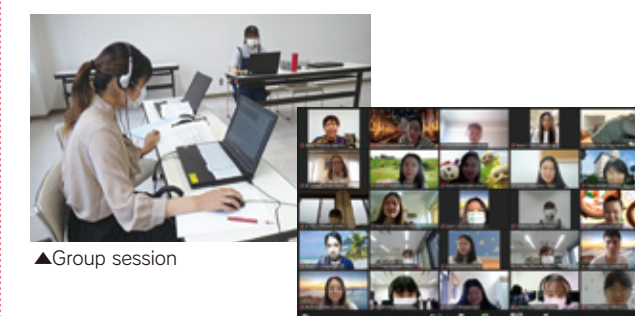


▲Students with their participation certificates

A Valuable Experience, Even Online (Thailand)

Mayu U.

I took part in an online exchange program with Chiang Mai University in Thailand. I gave a presentation about the entrance exam and university life. During the Q&A session, Thai students bombarded me with questions about university life, foreign nurses working in Japan, and coronavirus illness. I believed that if I had prepared resources in advance for such issues, I would have been able to offer more thorough explanations, and I learnt that advance preparation is required for a more satisfying student exchange experience. Being able to have a cross-border exchange while in Japan was a good experience for me.



▲Group session

▲Exchange with students from Thailand, China, and Hong Kong

Campus & Facilities

An ideal learning environment

● Campus

Facilities include the Administration Building, which houses the main office; the Education and Research Building, where classrooms, laboratories, computer rooms, and faculty offices are located; the Florence Nightingale Library; the Student Union with cafeteria; and the Takaki Auditorium. Our campus also has a gymnasium and workout room, an athletic ground with a 250-meter track, a soccer field, and three tennis courts.

● Education & Research Facilities

To support our students' productive learning, all lecture and nursing practice rooms have audio-visual equipment installed, and our campus intranet hosts a nursing learning system geared toward group work and self-evaluation. The Florence Nightingale Library also provides a wide range of books and journals, and it includes a comprehensive audio-visual corner. Since 2020, our university has been fully integrated utilizing a comprehensive online suite, and classes, coursework, meetings, and more can be held online whenever necessary.



1 Center Promenade

This spacious central courtyard provides a meeting place for students to interact.



2 Takaki Auditorium

Named after a doctor from Miyazaki, Takaki Kanehiro, known for contributing to the history of nursing education in Japan, this 430-seat auditorium is the setting for university ceremonies as well as public lectures and events.



3 Student Union Building

The cafeteria and a small shop are located on the first floor, and the student government and activity rooms are on the second floor.



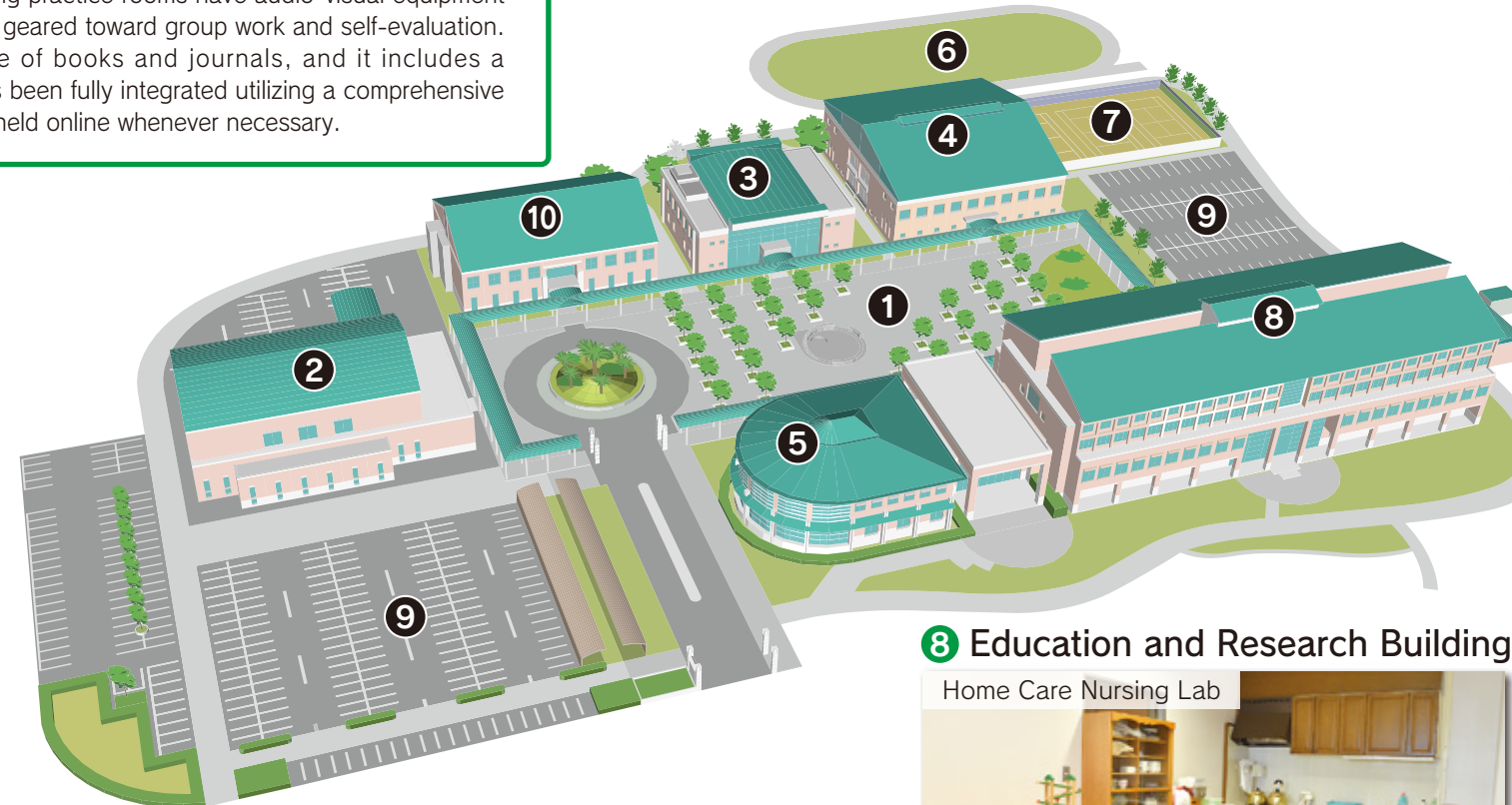
4 Gymnasium & Fitness Room

Students use this facility both for class and for club activities. It includes a workout room on the second floor.



5 Florence Nightingale Library

Serving as the central research hub of the university, the library holdings can be searched online from both on- and off-campus. The library also connects students and researchers with multiple online repositories and databases by which to search for the most up-to-date research. The library, itself, includes space to hold 100,000 books, journals, and magazines.



6 250m Track & Soccer Field 9 Parking Lot

7 Tennis Courts 10 Administration Building

8 Education and Research Building

Home Care Nursing Lab



Mainly for the practice of Psychiatric, Public Health, and Home Care Nursing, this room has both a kitchen and a tatami mat room, allowing students to practice in an actual home-like setting.

Nursing Lab 2



This is the main training room for nursing methods related to Adult and Gerontological Nursing Science. It has the most equipment among our Labs, including medical equipment such as bedside monitors and simulation models.

Nursing Lab 1



The location of Fundamentals of Nursing courses for the study of and practical training in nursing methods and the fundamentals of nursing science.

Nursing Lab 3



This lab is primarily for Maternity and Pediatric Nursing Science practice. It is equipped with a delivery table, baby baths, and baby models.

International access to Miyazaki Prefectural Nursing University

Tokyo to Miyazaki: 1.5 hours by air

Osaka to Miyazaki: 1 hour by air

Fukuoka to Miyazaki: 40 minutes by air



Aoshima

An island surrounded by unique geological features, beautiful beaches, and a shrine with a history of over a thousand years.



Udo Shrine

A Shinto shrine built into a cave in the cliffs of Nichinan on the Pacific Ocean, Udo Shrine has buildings dating back to the 16th century.



Kagura

A traditional Japanese dance originally performed as a form of religious worship, and an important part of Japan's cultural heritage.



Miyazaki Mango

One of the most popular of Miyazaki's abundant produce, the "Egg of the Sun" mango is in a class of its own.



Miyazaki Prefectural Nursing University

3-5-1 Manabino, Miyazaki 880-0929 JAPAN

TEL +81-(0)-985-59-7700

www.mpu.ac.jp/en

